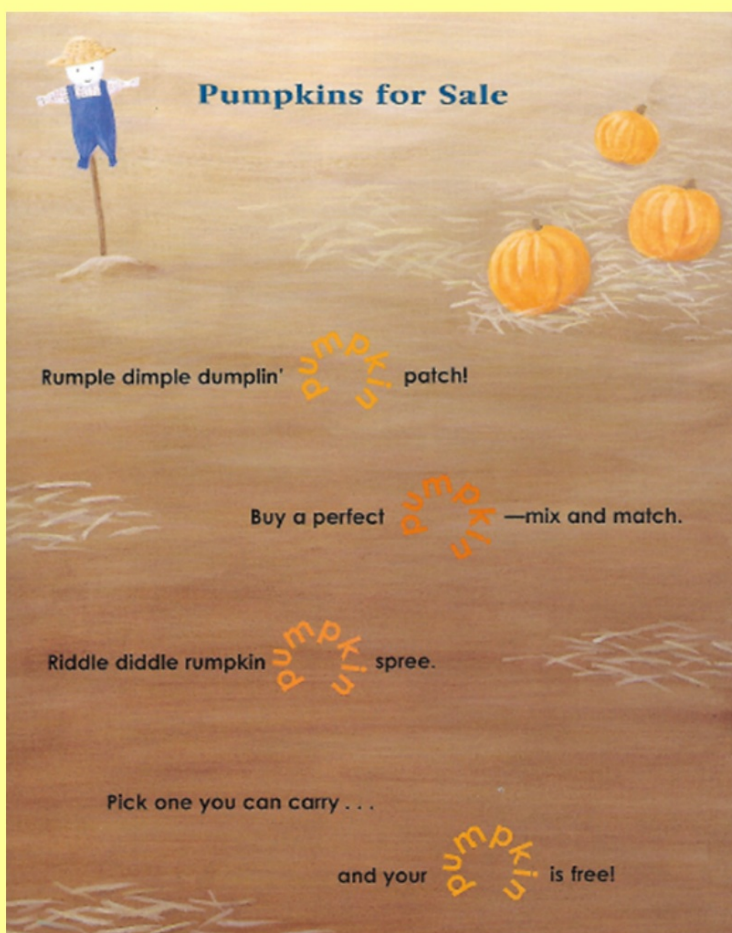


Monday 23rd November



Retrieve



R: What four rhyming words does the poet use?

Interpret



I: What activity is this poem about?

Choice



C: Why do you think the poet has written the word 'pumpkin' differently to the other words?

Katy,
Katy, lover
of fruit, drew
a face that
looked real
cute on a
banana in a
bowl, made it
smile (while it
was a whole),
Katy, ☺ Katy,
lover of fruit,
ripped its top,
(the little brute)
from its flesh
tore yellow skin-
four dying flames
left dangling.
Katy, Katy, lover
of fruit, a cruel
child of ill
repute, sliced it
up and made it
scream so drowned
it in a dish of
cream. Katy, Katy,
lover of fruit,
thought a face
would look real
cute on an orange
in a basket
but it bit her
when she
grasped
it!

How do our
feeling towards
Kate/Katy
change during
the poem?
Why?

What does the
shape add to
the poem?

Wednesday 25th November

Comprehension questions based on Kate's Ban

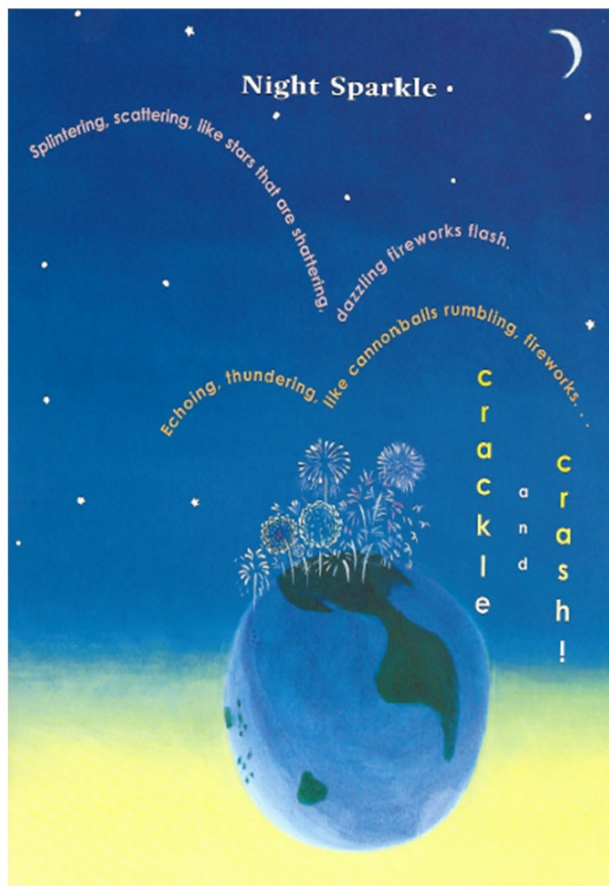


1. Find and copy the phrase that is repeated four times in the poem.
2. Do you agree with this phrase? Why/why not?
3. What does the poet mean by 'from its flesh tore yellow dying flames left dangling'?
4. Ill repute means that having a bad reputation. List three things that Katy does that give her a bad reputation.
5. Did you find the poem funny? Why/why not?

Kate
Katy, lover of fruit, dressed
of fruit, dressed
a face that
looked real
cute on a
banana in a
bowl, made it
smile (while it
was whole),
Katy, Katy, lover of fruit,
ripped its top,
(the little brute)
from its flesh
tore yellow skin-
four dying flames
left dangling.
Katy, Katy, lover
of fruit, a cruel
child of ill-
repute, sliced it
up and made it
scream so drowned
it in a dish of
cream. Katy, Katy,
lover of fruit,
thought a face
would look real
cute on an orange
in a banana
but it bit
when I
grasped
it!

Thursday 26th November

What similes does the poet use?



How does the poet use 'sound effects'?



Friday 27th November

Why do you think the poet has chosen to write the poem in this way?

