

Lesson 3: Creating a branching database

Year 3 – Data and information – Branching databases

Lesson 3: Creating a branching tree

To create a branching database

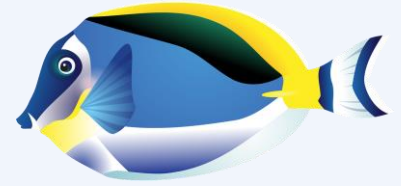
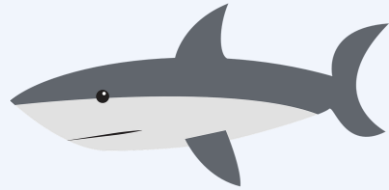
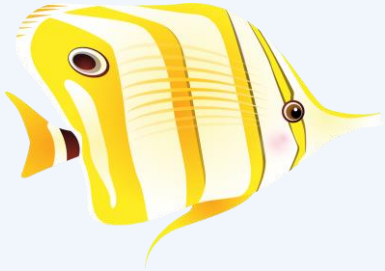
- I can select objects to arrange in a branching database
- I can group objects using my own yes/no questions
- I can prove my branching database works

What is a common attribute for these objects?



Colour (pink)

What is a common attribute for these objects?

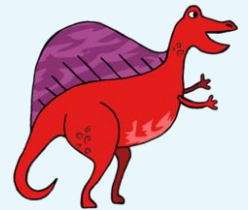
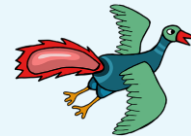
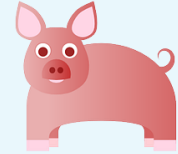


Habitat (sea) or number of legs (0)

Creating an online branching database

What do you need before you can begin building a branching database?

Objects to ask questions about



Choose objects



Pick six (6) objects to use in your database.

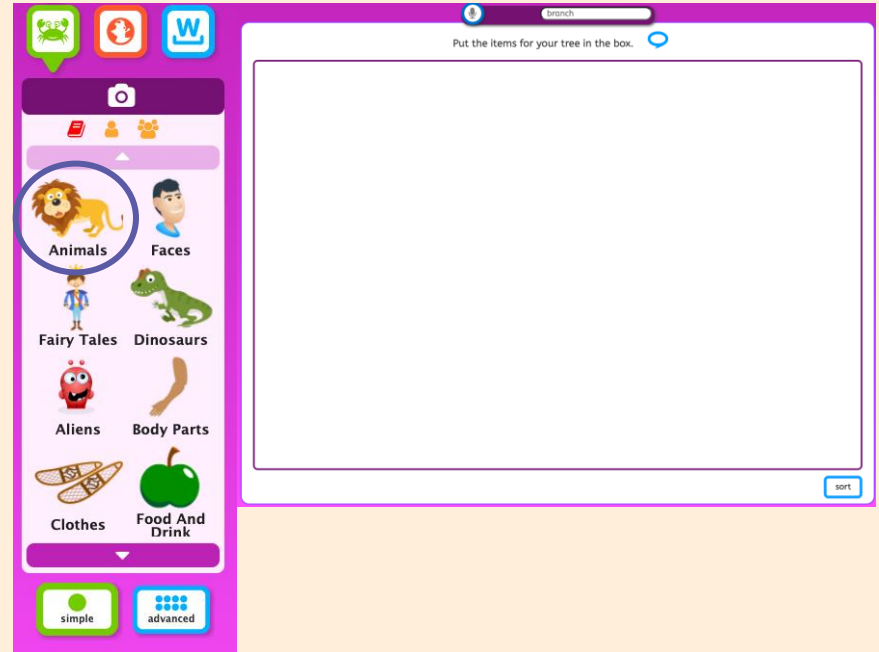
Write down the numbers of the animals you want to use.

Creating an online branching database

The screenshot shows a software interface for creating a branching database. At the top right, there is a navigation bar with buttons for 'write', 'paint', 'turtle', 'chart', 'pictogram', 'animate', 'branch', and 'mix'. Below this is a search bar containing the text 'branch' and an 'upgrade' button. The main workspace is a large white box with the instruction 'Put the items for your tree in the box.' and a speech bubble icon. A 'templates' window is open, displaying four options: 'blank', 'beach', 'park', and 'iceberg', each with a corresponding illustration. On the left side, there is a vertical menu with various categories: 'Animals' (lion), 'Faces' (man), 'Fairy Tales' (fairy), 'Dinosaurs' (dinosaur), 'Aliens' (alien), 'Body Parts' (arm), 'Clothes' (bandage), and 'Food And Drink' (apple). At the bottom of this menu are 'simple' and 'advanced' buttons. The background is a vibrant purple.

Creating an online branching database

1. Open the 'Branch' tool.
2. Select the **Animals** library set.
3. Click the animals that you chose.
This adds them to the main box.
4. Begin organising your database
by writing questions with a yes
or no answer.

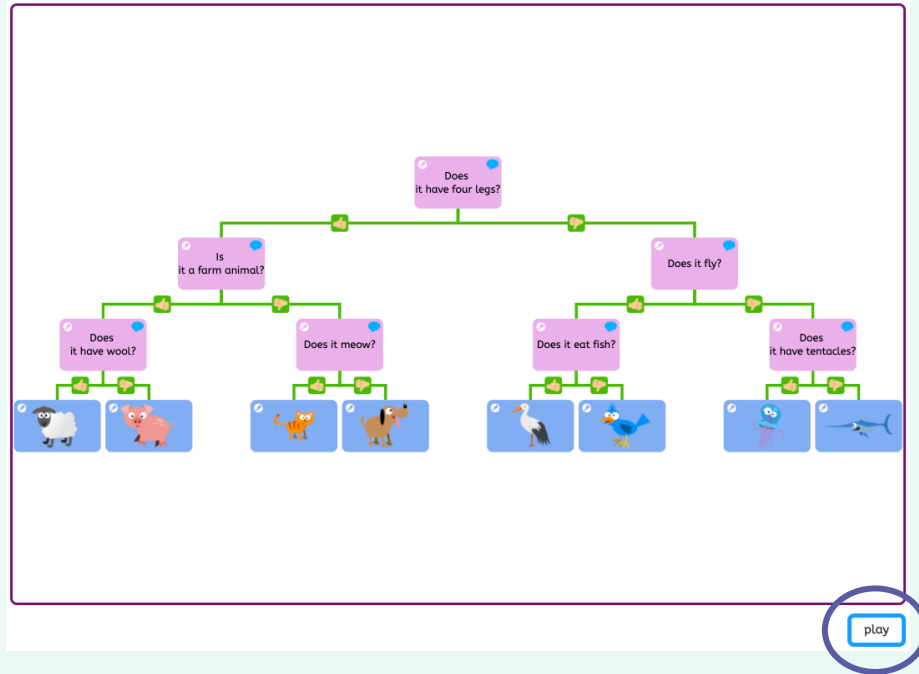


Create a branching database

- Does it have more than two legs?
- Does it live on a farm?
- Does it have wings?

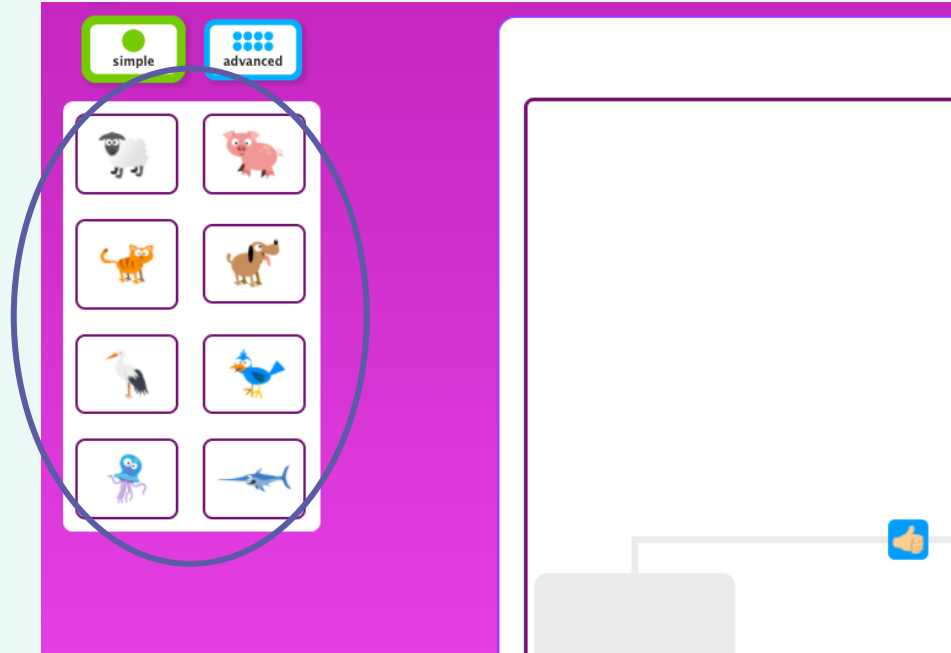


Testing the branching database



Select the **Play** button

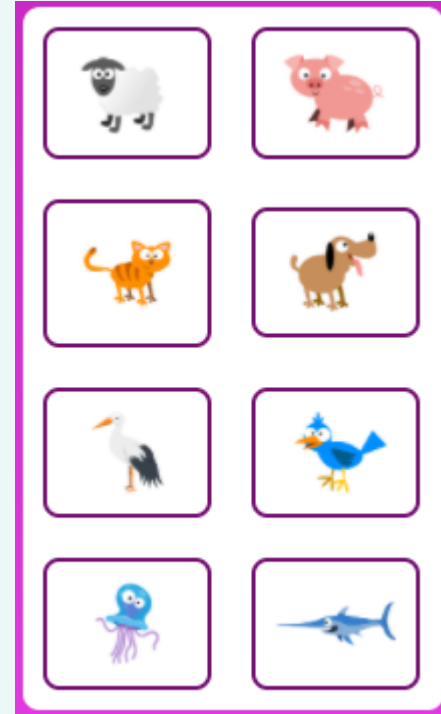
Testing the branching database



Your chosen animals will be in this box

Testing the branching database

1. Swap places with a partner
2. Choose one of the animals from your partner's database
3. Answer the questions to test the branching database



Did the branching database work?

1. Do the questions focus on the correct attributes?
1. Have the animals been organised into the correct groups?
1. What could make the database better?



How confident are you? (1-3)

- I can select objects to arrange in a branching database
- I can group objects using my own yes/no questions
- I can prove my branching database works

3 - Very confident



2 - Unsure



1 - Not confident



Next lesson

In this lesson, you...

Chose a number of objects to create a branching database

Created a branching database and tested it to ensure it worked as you intended

Next lesson, you will...

Create questions based on attributes

Begin to understand that questions need to be ordered carefully

Compare two branching database structures