



# Wrockwardine Wood C of E Junior School

## SEND Newsletter

'Love, Laugh and Learn'

Spring 2022



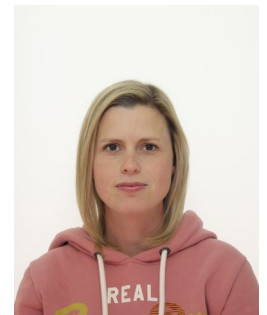
Mrs. Alison Williams

Hello and welcome to our Spring newsletter. We have had a busy start to 2022, which seems to have flown by! Our children have worked really hard and taken part in lots of interventions through the term to compliment what they are achieving in the classroom.

SEND Contact Details:

01952 387880 [alison.hopkins@taw.org.uk](mailto:alison.hopkins@taw.org.uk)

I would like to take this opportunity to introduce Sarah Rushton (who the children will refer to as Sarah). She is our Education Mental Health Practitioner and has been allocated by Telford and Wrekin as a result of the impact of the Pandemic on our children and their mental health. She will work across six schools in the area and share her expertise with us to help develop the way we can support children and staff with mental health and wellbeing.



Sarah spent the day in school with us on Monday 28th March, running an assembly on sleep, meeting our School Council and sitting in classes getting to know our children. We are looking forward to her becoming a bigger part of our school.

One of the ways Sarah can support us is by offering workshops for parents. To help us decide what sort of workshops to run, please follow the link to express your interest in different workshops.. If you

are unable to complete it this way, please feel free to email or phone me on the contact details above.



*Current training booked in for staff to improve the outcomes of our children with SEND:*

### **Speech & Language Narrative**

*A Speech and Language Therapy led training session, training us on how to teach children to develop a narrative and how this can impact their English work.*

### **Direct Instruction**

*Our LSAT (Learning Support Advisory Teacher) Sarah Court, will be delivering training on Direct Instruction as an alternative way of supporting children with their reading.*

### **National Network of Mental Health Leads**

*I have begun this training, which will continue throughout the year and will compliment the work in school with Sarah Rushton. We have completed a Mental Health and Wellbeing audit together to help focus our intentions for the Summer Term and beyond.*



About Children's Autism Hub | Telford Autism Hub

Telford Autism Hub has been launched this year and has a wealth of information on the website for children with ASD and their families.

They offer:

- Parent workshops
- 1:1 support and Peer Support
- Family Play Sessions
- Coffee & Chat
- Youth Groups



# PODS HELPLINE

(Supporting families with disabled/Additional need children aged 0-25 years)

Are you in need of some guidance or information? Would you like to access our Befriending service or maybe receive a call from one of our staff?

Then please give us a call or email us!



01952 458047

[support@podstelford.org](mailto:support@podstelford.org)

Calls will be answered between 10am-4pm Monday-Friday, outside these hours please leave a message.



Telford and Wrekin produce their own SEND newsletter on their local offer. It is full of updates, useful training and links to other agencies.

[SEND News \(telfordsend.org.uk\)](http://telfordsend.org.uk)

Follow the link to read this month's update. If you register you can receive the newsletters straight to your inbox.



Is there anything you would like to see on the newsletter?

Would you like your children's work displayed on the newsletter or photos of their incredible achievements?

Feel free to email me to share any ideas you have: [alison.hopkins@taw.org.uk](mailto:alison.hopkins@taw.org.uk)