

Friday 8th April

L.O. To consider end of life  
celebrations

## Starter

What do you think is happening?

How does it tie in with the idea of 'salvation'?

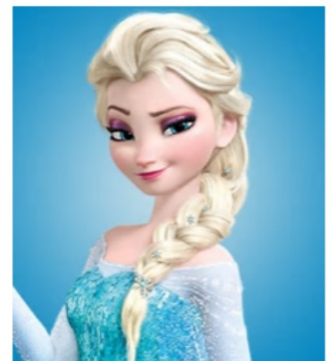
<https://www.youtube.com/watch?v=WsOBsj8g6Dw>



Which kinds of songs and readings are played at funerals?

Imagine it was one of these characters funerals. What sort of songs/readings might be appropriate for them?

Choose one of them and annotate their picture with funeral details!



Read the readings, poems and hymns and sort them into whose funeral they would be suitable for. Cut them out and place them in these groups on your table, highlighting which words helped your decision:

**Atheist - doesn't believe in God**

**Agnostic - believe it's impossible for humans to know anything about how the universe was created and if divine beings exist**

**Christian - believe in God**

**Take photo for books**

Choose one of the readings or songs and write a paragraph which answers this question:

How does the text reflect the belief of the person who died?

Try to include some of these words:

salvation  
belief  
afterlife  
eternal life  
gospel  
faith  
heaven

## Model an example:

"Do not let your hearts be troubled.

Trust in God; trust also in me.

In my Father's house are many rooms; if it were not so, I would have told you.

I am going there to prepare a place for you.

And if I go and prepare a place for you, I will come back and take you to be with me that you also may be where I am.

You know the way to the place where I am going."

Thomas said to him, "Lord, we don't know where you are going, so how can we know the way?"

Jesus answered, "I am the way and the truth and the life. No one comes to the Father except through me."

A writing area consisting of a vertical red margin line on the left side and ten horizontal blue lines for text, extending across the width of the page.